



MFA NEWS

Inside This Issue

• MFA Board of Directors	Page 2
• Patrol Report	Page 2
• Michaux Forest News	Page 3
• Cooke Twp. News	Page 4
• Friends of the Park	Page 5
• PGFSP News /History	Page 6

THE NEWSLETTER OF THE MICHAUX FOREST ASSOCIATION

www.michauxforestassociation.org

Fall 2013

Editor: Debra Rosevear



The President's Column

By Jim Walters

I have been visiting Pine Grove Furnace and the Michaux Forest for twenty years, and decided it was time to have my own cabin. I purchased a chestnut log cabin seven years ago and it needed an incredible amount of work. After many years of restoration: roof, floors, windows, chinking! etc. my cabin is in great shape. One of the heartbreakers was tearing up the old chestnut porch decking that was rotted and replacing it. I saved all the boards that were salvageable and stored them for possible future use. Now, as I plane down the old wormy chestnut to make shutters, I am reflecting on all the changes I am seeing involving cabins in the area. I can't help but think how cabin owners are real historical preservationists.

By lovingly restoring these old cabins (mine hails from the late 1920's) cabin owners are keeping a real piece of history alive, a piece of history that will never be duplicated again. I see and hear stories of owners whose original cabins have burned to the ground, with only a tiny wall or stone fireplace standing. By rebuilding around that standing wall, a small piece of history is kept alive. So when you drive around the park and forest, and you see construction happening, either an addition or a complete renova-

tion, stop and ponder about the historical significance that a cabin restoration brings. It will keep history alive for future generations to enjoy, and hopefully, appreciate. Enjoy the beautiful autumn season!

Regards,
Jim Walters
President,
Michaux Forest Association



A Note About our Membership

We've been working very hard to get our MFA database up to date. When cabins are bought and sold, very few people notify us and in a very short time our database for newsletters and membership flyers is very out of date. Our Michaux Forest Association membership had dropped and we, as a board, were quite concerned. When we began investigating, we found that many of our members had not paid dues for a few years, and we were still sending out newsletters and patrolling their cabins. We cannot afford to do that. And also, we had many people who had sold their cabins and we had no idea who bought them. There was no contact information to send out membership flyers to bring them into our organization.

Well, our new treasurer, Georgia Freet, has done a lot of work getting our database up to date. And we can all help her by keeping her, or any of the MFA board members, informed any

time a cabin near us changes owners. If you see a cabin that has a Sold sign on it, call someone on the board and let them know. If you can find out who bought it and give us some contact information – even better!

Please remember that dues are actually DUE on June 30th. And those dues are for July 1 until June 30th of the next year. So, next year when you get our spring newsletter and membership flyer, remember to send in your membership dues before June 30. (Or you can always pay them at the annual meeting in June) Any cabin with dues not paid by Aug. 30th will be taken off the MFA membership rolls. No fall newsletter will be sent and your cabin will no longer be patrolled. \$40 is an incredible price for two newsletters a year, AND to have someone drive to your cabin, walk around it, and inspect it, then call you if there's any damage.

Thanks to everyone who paid their dues and especially to those caught up on past due memberships. As we always say, there's strength in numbers. Keep up your membership and keep our organization strong.





MFA Patrol Report

By *Richard G. Baish*
richbaish@centurylink.net

Greetings MFA Members!

As I start this message, I am enjoying a sunny Columbus Day afternoon in the beautiful Michaux forest. I am not alone, as I have seen many cabin dwellers and park visitors enjoying the extended weekend and fall foliage. The trees around Laurel lake are starting to turn bright red; thus, reminding me that the summer season is over and winter weather will soon be upon us.

I am happy to report that my inspections went well this season. Human vandalism was at a minimum as there were only a few isolated incidents. In those cases, while disturbing, the amount of damage and theft was minimal. And as I report every year, we had some severe storms that did their share of damage to several campsites. In some cases, damages were considerable, ranging from limbs on rooftops to large trees falling on out-buildings and privies. Some of the limbs that fell on properties were dangling left-overs from the northeasterner that came through two years ago!

In order to promote our association, our dedicated board made an effort this year to reach out to our absentee members and introduce our organization to new cabin owners. *To this date, I have seen about ten new members that have joined this worthy group. To those new members, I say welcome aboard!*

By the time you read this report, everyone should have had a visit by me for this MFA year. This fact can be verified by the business size MFA card in your door or window. On the card will be marked the Julian date of the inspection and my initials. I tend to leave the cards at different locations at each cabin, to assure you I check more than just the front door. Some people prefer the cards left only in one spot and there are a couple members that prefer not to have the card left at all. If you have any preference, please do not hesitate to contact me and let me know. I can be reached by email at RICHBAISH@CENTURYLINK.NET or

by phone (717-249-1353). I can also receive messages on my cell (717-226-4959).

An updated MFA membership roster should be completed and sent to me sometime in November. If anyone has any concerns that they have been excluded from my inspections, please contact any board member or myself as soon as possible in order for the problem to be resolved.

Best wishes to everyone for a happy, healthy fall and winter season!

Sincerely
Richard G. Baish

MFA BOARD OF DIRECTORS

Officers

President: Jim Walters

jaw@asi-pa.com

717-309-3193 (Cell)

Vice-President: John Strine

Treasurer: Georgia Freet

Secretary: Nancy Summers

Newsletter Editor: Debra Rosevear

Directors

Mark Colucci

David Dowling

Bobbie Goodyear

Bob Shenk

Judy Wenberg

“For Service That Is As
Good As Gold”
RON KOSER’S ELECTRIC
No Job Too Small
327 Pine Grove Road
Gardners, PA
(717) 486-8947
For All Your
Electrical Needs

Help Wanted!!!

The MFA is looking for someone to take over being Webmaster for our web site.

The current Webmaster is willing to train a eager person. If interested, please send an email to our President Jim Walters at "jaw@asi-pa.com" with the heading "MFA Webmaster".

If you have good computer skills this is a great opportunity to work on those skills, learn web site design, and get some experience.



FEUCHTENBERGER CONSTRUCTION

"Complete Cabin Care"
Ed Feuchtenberger Newville, PA

Cell 717-226-4970

-Remodeling

-Roofing

-Custom Building

-Decks





Thinking About History

Roy Brubaker

It's been another busy summer on the Michaux, and we've accomplished a number of significant projects this year that have me feeling extremely proud of the talented and hard-working staff we have here in the district. I'd like to point out three highlights in particular, not because they represent our greatest accomplishments; but because they represent some of the more complex challenges we have tried to work on this year. In fact, all three could be considered "works in progress" that we hope to sustain over the coming years.

One of the most fun projects was a prescribed burn we conducted on our Fern Ridge Sale. The objective of this burn was to encourage a more desirable mix of oak and pine species by reducing a super competitive shade layer of black birch and sassafras in the midstory. The burn was considered a high complexity burn in large part because it took place inside a deer exclusion fence, so it took a good bit of planning. Pulling it off successfully was the

result of a lot of teamwork across our district staff, as well as with other surrounding districts. It was the first step in what will continue to be a long, very careful learning process on using prescribed fire as a management tool within the Michaux.

We have also worked very hard this year to find a better balance in terms of the numbers of large group activities hosted on the Michaux. At this point, as a district we host more large group activities than the rest of the twenty state forest districts combined. This is in large part due to the geographical location of the Michaux; a large, contiguous tract of public forest land in close proximity to numerous large and small population centers. We are working with both stakeholders within the recreational events/eventing community, our Operation and Recreation Sections in Harrisburg, and other local partners such as the South Mountain partnership, to find a better balance to the amount of time and effort we invest in hosting large group activities and the amount of time we have to invest in working on strategic and sustainable trail and rec infrastructure needs that broadly serve both public interests in recreational opportunities on the Michaux as well as the ecological health and resilience of the forest as a biological system.

Lastly, and perhaps most importantly for the MFA membership, we have worked very hard this year to better understand the issues associated with reviewing and approving new water sources at leased campsites within the Michaux. After numerous discussions with the MFA board and our Operations Section in Harrisburg, and local municipal stakeholders, we are preparing to accept applications from Leased campsite leases during the 2014 calendar year. We are still working out some of the details of how the process for applying for a new well or water system within the leased campsite program will work, but should be able to communicate this to you in the very near future. Some of our most critical challenges and priorities include:

- Having a system to ensure fair and equitable access in getting new water development requests considered.

- Ensuring water infrastructure development approved is consistent and compatible with Leased campsite guidelines and local municipal regulations
- Ensuring we can handle the additional workload of reviewing and approving well/water development requests in a responsible manner

We will be sending out notification to all leased campsite owners at some point in the coming months outlining how and when to submit applications for water infrastructure improvement requests for the 2014 season. It will not be a perfect system, I'm sure. But I hope it will provide a constructive, fair, and transparent way forward in meeting the interests and expectations of our leased campsite community in a way that is compatible other demands and interests we face on the Michaux.

Wishing you all the best in this fall season.

Roy Brubaker
District Forester,
Michaux State Forest

Editor's Note: The MFA Board of Directors and it's members wish to thank Roy for all the work he has done on the water system project.

Wolfe & Company Realtors

717-243-1551

Your Cabin Team

"Experience Matters"
WE KNOW MICHAX

33 South Pitt St.
Carlisle, PA 17013

www.wolfecompanyrealtors.com

Since 1986

YORK TREE SERVICE, INC.
York County's First TCIA
Accredited Tree Care Co.

We ♥ TREES



2108 West Market St.
York, PA 17404
(717) 792-3921 Fax 792-4101

Email: info@yorktreeservice.com
www.yorktreeservice.com

Bruce Stryker – ISA Cert. Arborist
Bob Meckley – ISA Cert. Arborist
Jon Hettinger – CTSP Certified
Tree Care Safety Professional
**Natural Pruning, Spraying and
Fertilization for Safe, Healthy and
Beautiful Trees**



What's Cooking in Cooke

Bill Jones: *Twp. Supervisor*
Andre Weltman: *Township Planning Committee*

As a reminder, Cooke Township ordinances, resolutions and other information are available on our website www.cooketwp.org. Questions may also be emailed to cooketwp@kuhncom.net. Please feel free to attend Township Board of Supervisors meetings, usually held the first Tuesday of each month at 7:30 P.M. at the Township building, 1700 Centerville Road. Your attendance and participation are always welcome. (Before dropping by, check for schedule changes on our website or on the bulletin board next to the front door).

ROADS: In September we contracted to have approximately 1300 feet of Bendersville Road from the Adams County line coming towards the Park repaired. This section was in terrible shape. Placement of Superpave 9.5mm scratch/leveling course of approximately 1 inch depth compacted was accomplished using 240.6 tons of material. Cost for this project was \$18,000. Next year, we hope to continue from that point and go twice the distance. Hopefully our legislators will one day pass a realistic Prevailing Wage Bill. Currently \$25,000 is the threshold. As you can see, if it took \$18,000 to do 1300 feet, you can image what a real leveling course of 2 to 3 inches over any distance would cost. Last year, to seal coat (tar & chip) it cost approximately \$14,000 to do one mile.

We're in the process of getting equipment ready for winter. We had our V-plow in for some welding repair. Just received over 96 tons of Type 6 anti-skid and have received over 24 tons of salt, mixed and stored.

Each year we issue a Cooke Status report on equipment and roads. Below is the report from September 2013:

EQUIPMENT:

- 1964 HUBER GRADER**, S/N 2753.....
49 Years old; numerous fluid leaks; lucky it runs
- 2012 JCB-3CX-14 BACKHOE**. New
March 2012
- 1990 TRACTOR**, Ford 1920, 32HP
23 Years old; need next size up/more HP, w/front end loader
- 1999 GMC**, 9,200 GVWR pickup.....
14 Years old (V-Plow w/drop in bed spreader)
- 2006 GMC**, TC5C044, 19,500 GVWR...7 years old (plow and spreader)
- 2011 FORD**, F550, 19,000 GVWR....2 years old (plow and spreader)

ROADS (normally recommended to tar/chip every 7 to 10 years)

- Bendersville (T340)** (upper to county line) last tar/chip 8/89 Has been 24 years! Way overdue, especially. Summer 2012, replaced 6 drain tiles._10-12__more to go.
- Bendersville (Piney Mtn/Ridge to 233)** Tar/chip 6/12 approx. 2 miles from 233 towards Piney/Mtn/Ridge Note: From that point to top spread and rolled 76T 9.5MM on bad areas; summer 2012
- Bendersville Lane (T346)**...tar/chip 2002; 11years
- Bunkerhill (T335)**...couple of sections wash out constantly; but passable until repaired. Spread 2A yearly.
- Cold Springs (T356)**...last tar/chip 8/90; seal coat 2000; 13 years; dirt portion put down millings 2/12, not rolled
- High Mountain (T350)**; portions DSA 10/11 of 2007; need to connect portions; portion done continues to wash out in places. Rest of road spread 2A yearly. 8/12, tech assist review for solutions. (not feasible)
- Ice House (T345)**..Park Project May 2009; 3" compacted 2A
- Ice House Lane (T347)**...spread 2A as required
- Iron Run (T324)**....Millings 2000; not rolled
- Leaf (T343)**..spread 2A as required; last done March 2011
- Leper Farm (T342)**..grade w/Huber & backhoe; spread 2A yearly
- Marie Drive (T361)**...grade with Huber; spread 2A as required

**Spencer & Spencer
Realtors**

Experienced in working
with Park and State officials

Carlisle: 717-258-4666
Shippensburg: 717-532-4160

References & no obligation
market value analysis.

Sharon L. Spencer, Owner
Scott Fickes, Realtor
Gary Foster, Realtor

- Michaux (T338)** (upper 5/06 Tar/Chip and binder in 9/08. **Michaux (lower)** tar/chip 6/11
- Michaux Oaks (T322)**, 6/04...9 years, crack in turnaround and lower portion, filled w/patch
- Murphy (T341)**..Park Project May 2009; 3-4" DSA, primed & chipped lightly. July 2010, tar & chip
- Murphy extended**...4/2011 repair major washouts twice, 3/12 lay millings, not rolled
- Old Railroad Bed (T348)**...Park project May 2009; last .27M grading, leveling w/ stone; tar & chip. First .8M; July 2010 tar & chip.
- Old Shippensburg (T355)**...could not find when last time it was done. Due (will need leveling course), dirt portion, 2/12 lay down millings, not rolled. Summer 2012, spread/rolled 24T 9.5MM on bad areas.
- Peach Orchard (T344)**...widen/level/shale 1998; section geotextile/DSA 2000; middle section prone to wash outs
- Pinebrook (T370) (Oak (T371), Deer (T373), Dogwood (T372))**...tar/chip 6/11
- Pine Tree Drive (T360)**...6/12; tar/chip
- Quarry Road (T336)**----Over 20 years. Due (however is in fair to good shape)
- Quarry (Upper)**...3/12 lay down millings, not rolled
- Ridge (T323)**...Junction Peach Orchard to High Mountain; DSA October 2007; washes out; rest of road spread 2A as required (yearly)

OTHER
TOWNSHIP SALT AND STORAGE
SHEDS: Currently in salt shed, salt/anti-skid mix kept on one side, backhoe in

other. Need to put concrete pad in backhoe side for salt storage. In dire need of an equipment storage shed for Huber, Tractor, Backhoe, Plows, Spreader and mowing equipment. Presently when plows installed to go from one bay to another you have to climb over plows. Safety concern.

*Regards,
Bill Jones & Andre Weltman*

**Friends of Pine Grove
Furnace State Park**

*By Mary Soderberg,
Vice-President*

About a half a million people visited Pine Grove Furnace State Park in 2012. It is expected that attendance in 2013 will match that number. Although attendance in our parks has continued to grow, the state funding has not. As a result, Pine Grove Furnace State Park has increasingly turned to volunteers as a way to maintain quality educational and recreational programs during these times of government cutbacks.

To help support Pine Grove Furnace State Park meet these increasing demands, the Friends of Pine Grove Furnace State Park was organized by a small group of volunteers in 2010. The Friends group formed with the goal to *Keep history alive and promote the educational and recreational programs of Pine Grove Furnace State Park and surrounding areas through special events and trail development while protecting the park's natural resources.*

Toward that goal, the Friends group raises funds through the annual Fall Fest in October, the Iron Run in June, the sale of firewood at the campground, and the sale of park merchandise. The funds have been used to purchase park equipment including picnic tables, a wood splitter, recycling containers, a public address system for Fuller Lake and environmental education items. In addition, the Friends pay for the entertainment at Fall Fest and the lunches for the volunteer work days.

Currently, the Friends are working to fund the repair of the 250 year old stone

furnace stack in the center of the park. The thirty year old plywood and rubber sheeting on top of the 30-foot-tall furnace collapsed into the stack earlier this spring. This means that rain can now run down into structure creating pressure on the stone walls when the water freezes and thaws. To prevent the further deterioration of the historic structure, the Friends group is working to secure a matching grant to help pay the \$5,000 needed for a new concrete cap. In addition to financial support, the Friends volunteers play an important role in maintenance at Pine Grove Furnace State Park. The Friends have built picnic tables, split and bundled firewood, maintained trails, built walking bridges, painted the historic buildings, removed invasive plants, and planted trees. Friends volunteers are also critical to providing historical educational programs at the park as well as staffing a number of community events like Fall Fest and the Iron Run and Charcoal Challenge Races.

The park is doing an incredible job of managing within the budget constraints, but without the support of the Friends and all of its members a lot of the special events and services that the park provides would not be possible. Throughout the 2013 season, volunteers both individually and in groups contributed more than 2,200 hours of service to Pine Grove Furnace State Park. That equates to about 60 weeks of donated work!

To join the Friends of Pine Grove Furnace, you can download an application at <http://www.pinegrovefriends.org> or you can stop by the park's office and pick up an application. The cost of an individual membership is \$10; a family membership is only \$15.

If you are interested in volunteering, the Department of Conservation and Natural Resources has created a Conservation Volunteer Database as a way to solicit volunteers for state parks and keep track of their hours. Once you are registered as volunteer, the park will email you information on volunteer work days. To sign up to volunteer at Pine Grove or at other state parks go to the DCNR website and complete a volunteer application at <https://www.volunteers.dcnr.state.pa.us>.



*Pine Grove Furnace Boarding House c. 1890
Currently Park Headquarters*

The MFA Web Site

www.michauxforestassociation.org

Please check out our website for a full color fall newsletter.

**GREEN MOUNTAIN
GENERAL MERCHANDISE
A Real General Store!**

4640 Carlisle Road
Gardners, PA 17324
486-4558

- Groceries**
- Fishing Licenses**
- Live Bait**
- Sandwiches**
- Hardware**

Open Monday thru Friday
7:00 AM - 8:00 PM
Saturday 8:00 AM - 8:00 PM
Sunday 9:00 AM - 6:00 PM
OPEN ALL YEAR!



**5 West Pine St
Mt. Holly Springs, PA**

717-486-8800

Tues.- Sun. 11am to 9pm
Closed Mondays

Patio Dining Available



Jason Zimmerman, Park Manager

Park News - Pine Grove Furnace State Park

By Jason Zimmerman

We are winding down the 100th Anniversary celebration and just completed a highly successful Fall Furnace Fest. In its 5th year the event has now hit 7,300 visitors and continues to grow a little each year. We have welcomed in new vendors and partners adding to the size and activities of the event. Overall the 100th Anniversary events throughout the year were well-attended including the Unknown Stories program in August. A special thanks to those of you who shared your own personal stories to attendees.

Before I move forward I think it is important to share the contributions of our volunteers who assist staff to make these great events happen. Throughout the 2013 season volunteers both individually and in groups contributed 2243 hours of service to Pine Grove Furnace State Park. There were also service projects that varied from litter pick-up, painting, plantings, invasive species removal, trail rehab, firewood splitting and bundling, grant facilitation, environmental education, Eagle Scout Projects and college externships. For all of this the staff thanks you!

Throughout the year a number of projects were completed throughout the park. This year we focused on making improvements to existing facilities to help with efficiency in maintenance and to assist in becoming more user-friendly. All of the trails in the park were rehabbed by opening them up and fixing issues with poor drainage. Our parking lots and day use areas at both Laurel and Fuller were enhanced and bridge abutments were solidified. Sites B & C in the Organized Group Tenting Area were also

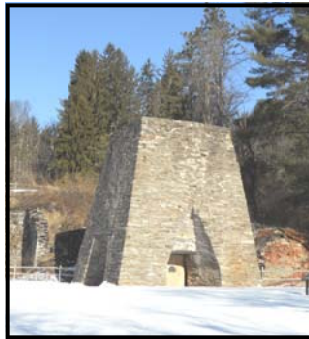
enhanced. Probably the biggest improvement that you noticed while driving through the park was the facelift in the historical area of the park. The staff continues to remove invasive plants in this area in an effort to make it historically accurate. You will also notice a fresh coat of paint that has dressed up the stables and Paymaster's Cabin.

Moving on to 2014 our focus will remain in the historical area of the park. Thanks to the South Mountain Partnership, the Friends Group has obtained a grant to cap the furnace and prevent further damage from weather. You will also see the grounds at the AT Museum change as the expansion project begins to unfold. There will be another great year of programming including the 2nd Goddard Leadership Legacy Institute at the Ironmaster's Mansion in July.

As always, to find a complete list of programs at this and all PA State Parks visit the DCNR Calendar of Events at www.dcnr.state.pa.us.



Making Apple Cider at the Fall Fest



Winter's Coming!



THREE PINES TAVERN

**336 N. Baltimore Ave.
Mount Holly Springs
486-3656**

Eat In or Take Out
Sandwiches/Home Made Soups
Wings—25 Flavors!
Steak—Seafood

Good Food, Good Friends
Good Fun

A Brief History of The Pumpkin Float

By Deb Rosevear

Before we had the two day Fall Fest, we had the Pumpkin Float. Most of you will remember the last Saturday before Halloween was always the date of the Pumpkin Float Halloween Program. We would all arrive at the Furnace Pavilion on a Saturday evening with our pumpkins, carving tools, and candles. A big bonfire was lit and when we finished carving our masterpieces, we set our glowing pumpkins out on the ground or on hay bales. Sometimes Park Manager Rosevear, would award certificates for the biggest pumpkin, the scariest, or the smallest. There were many awards, especially for the children.

Then came the fun! We would all assemble and process down the dark path towards the lake with our shining pumpkins held proudly in our hands. Children on shoulders, or walking with them and holding their hands, or perhaps with the older ones racing ahead, we laughed, tried to scare each other, or talked softly as we walked. It was all such great fun.

At the end of the long walk was the lake with the raft floating on the water, pumpkins glowing and reflecting in the water's surface. A beautiful sight! Then came the story and the rising hand, and the chanting "Go away Hairy Hand!" After the story when we tired of looking at the pumpkins, we walked back to the camp-

fire at the pavilion. Many years hot chocolate was served when we came back from the walk. We would then sit around the huge bonfire before we went back to our cabins. It was always a wonderful evening. The tradition grew and many years there were 400—600 people at the Halloween Program. Many of us have wonderful memories of those fun filled evenings.

A bit of the history of this tradition: In 1985, Park Manager Bill Rosevear and his family placed carved pumpkins at the shore of Fuller Lake. People commented about how neat it was to see the lit pumpkins along the shore. So he decided that he would develop a Halloween event for families. Bill was trained in environmental education and enjoyed doing programs for the public.

Back in 1986 he heard that in the 1940's cabin owners told their kids about a hairy hand that would pull them under the water if they didn't know how to swim. At that time non-swimmers were confined to a slimy, algae coated wooden "crib" near the spillway until they could swim. The lifeguards made them pass a test before they could swim in the open lake.

So that year, 1986, he placed pumpkins on an old dock float. He took the pumpkins and dock idea from a program that he started at his previous park, Prince Gallitzin State park, where he used DCNR Ranger Rick Brubaker as the "Ghost of Prince Gallitzin" for a Halloween program. At Pine Grove Furnace he told a brief story of the hairy hand and tried to illuminate one. His crew used a mannequin arm and placed it on a float. Unfortunately, the mist on the lake was so thick that no one could see it!

The next year, Ranger Dick Karper helped make a big hand using snow fence and 2x4's. It worked well and they used a floating lifeguard chair dock for the hand. They then made a string of stepped docks for the pumpkins. Everything evolved from that point.

Ray Trump was a seasonal naturalist at the park during that time period and also a high school science teacher at Cumberland Valley. Ray asked a fellow teacher to help make a tape of the story of the Legend of the Hairy Hand. That story was not the same as the original one that was told long ago, but it corresponded

PECK'S SEPTIC SERVICE
DEP Approved

"We do septic inspection"

Holding Tanks Cleaned
Privies Cleaned
System Inspections
Reasonable Rates
Immediate Service
486-5548

with the Halloween Program that Bill developed.

Before the tape was produced, the second AYH Hostel manager, Bob Beard, collaborated with Bill in 1987 or 1988. Bob wore a top hat and morning coat and told a version of the Hairy Hand story on the knob to the right of Fuller Beach. He also hosted an event at the hostel and had a square dance at the furnace stack pavilion during the same weekend.

Spread by word of mouth, year by year the event grew. Many volunteers helped over the years. Cabin owner Martin Yespy and his nephews usually helped load the pumpkins onto the rafts. The nights were quite cold, and the volunteers wore fishing waders, as they had to wade into the icy cold lake water to load the pumpkins onto the raft,.

Cabin owner Ken Myers always tried to bring the largest pumpkin. He was often seen wheeling it down to the pavilion in a wheelbarrow! After the program, Ken hosted wonderful Halloween parties at his lovely cabin near the lake. We are all so lucky to have such a beautiful area in which to have cabins. It's historical, well-maintained, and we have such wonderful traditions to uphold.



Editor's son on one of the first pumpkin rafts at the Fuller Lake. Note it was flat, not a riser-style.


717-258-8934
1-800-704-8934
Jim Collins, Broker

*Your Full Time
Professional REALTOR
Specializing in
Cabin Sales!*

*Over 25 Years of
Selling Experience.*

*1224 Holly Pike
Carlisle, PA 17013*

e-mail: cabins@seejim.com
www.Jim-JonCollins.com

MFA Litter Patrol 2013 Report

"Many hands make light work", was the phrase Don Raley used every time we met for the MFA litter patrol, and he is right! Many thanks to Don for his years of coordinating the litter patrol and making sure we met the PA DOT's Adopt-A-Highway Program standard for satisfactory participation. At the Annual Picnic, Don handed over the job to Bob and Diane Shenk, with a fully stocked box of supplies and those other words of wisdom, "Don't forget to bring the cookies!"

The MFA is responsible for picking up the litter from Pine Grove Furnace Ranger station to Laurel Lake four times a year, and in 2013, we met in April, June, August, and September. We have been very lucky to have had wonderful weather and lots of help. Special thanks to Jim and Sue Walters, Pat Bolden, Mary Soderberg, Mike Rish, Bill Jenkins, Warren Hardman, Mark Colucci, Jim Deppen, Martin Yespy, and everyone who got out of John Strine's van and Jeep that memorable Saturday. We hope our list is complete, but apologies to anyone we have missed.

Please let us know if you are interested in helping in 2014 by emailing Diane at dlshenk@comcast.net, using "MFA" in the subject line, or calling 717-566-3804. The dates have not yet been set, but we will contact everyone as soon as they are available.

*Respectfully Submitted,
Bob & Diane Shenk, Coordinators*

Century 21 *A Better Way*
398 East High Street
Carlisle, PA 17013

Jeffrey Helt, REALTOR®
Cell 717 - 422 - 4703
Direct 717 - 486 - 5691
Office 717 - 243 - 4929
Email JAHELT @ JAHELT .com

*When you're serious about your real estate needs
Call Jeff with A Better Way*



Michaux Forest Association
Debra Rosevear
645 Marlow Drive
York, PA 17402

